

# Al-Cu-N-Ti (Aluminum-Copper-Nitrogen-Titanium)

V. Raghavan

[1997Dur] investigated the phase relationships in this quaternary system at 850 °C and presented a schematic table of the interrelationships between the tie-tetrahedra and the adjoining three-phase fields of the system.

## Binary Systems

For brief descriptions of the Al-Cu, Al-Ti, and Cu-Ti phase diagrams, see the update on the Al-Cu-Ti system in this issue. See the Al-N-Ti update for descriptions of the Al-N and Ti-N phase diagrams. No intermediate phase was found at 850 °C in the Cu-N system [1997Dur].

## Ternary Systems

Updates on the Al-Cu-Ti and Al-N-Ti systems appear in this issue. In the Al-Cu-N system, no ternary phases were found at 600 °C [1997Dur]. An isothermal section of the Cu-N-Ti system at 850 °C determined by [1997Dur] is shown in Fig. 1. It depicts a ternary phase  $Ti_3CuN$  of tetragonal symmetry (denoted  $T$  here), with  $a = 1.1968$  nm and  $c = 0.30217$  nm.

## Quaternary Phase Equilibria

With starting materials of 99.999% Al, 99.999% Cu, 99% or 99.9% Ti, 99% AlN, and 99% AlTi, [1997Dur] arc-melted under Ar atm about 100 quaternary alloys. The alloys were annealed at 850 °C for 120 h and quenched in water. The composition of the phases was determined by energy dispersive x-ray analysis on a scanning electron microscope or on a microprobe. The structural analysis was done by x-ray powder diffraction. A number of three-phase

equilibria and 18 four-phase equilibria were determined and listed. A network of three-phase spaces and 29 four-phase spaces proposed by [1997Dur] at 850 °C is shown in Fig. 2. Experimentally determined four-phase spaces are in solid-outlined boxes. The four-phase spaces inferred and corroborated by calculation are shown in dashed boxes. The three-phase fields originating from the ternary systems are shaded gray. Most of the three-phase equilibria of the ternary systems are accounted, except for a few omissions such as the triangulations involving the  $Cu_3Ti_2$  and  $Ti_2N$ . In five three-phase spaces that lie entirely within the composition tetrahedron, their further links with other phase spaces are not known.

The quaternary  $\eta$ -type cubic phase is the dominating phase in the system, occurring in 21 four-phase spaces, of which 14 are experimentally observed [1997Dur]. [1989Car] first reported this phase with the general formula  $(Ti_{3-x}Cu_{3-x}Al_{2x})_6N$ , space group  $Fd\bar{3}m$  and lattice parameter of 1.13 nm. When in equilibrium with various phases of this quaternary system, [1997Dur] found the  $\eta$  phase to have a wide homogeneity range and a lattice parameter of 1.1279-1.1368 nm. [1997Dur] obtained a single-phase material at the composition  $Ti_3Cu_2Al_1N_{0.8}$  with  $a = 1.1339$  nm. The presence of a fifth phase in some cases was attributed by [1997Dur] to oxygen contamination and the formation of an  $\eta$ -type oxide phase.

## References

- 1989Car:** A.H. Carim, Identification and Characterization of  $(Ti,Cu,Al)_6N$ , a New  $\eta$  Nitride Phase, *J. Mater. Res.*, 1989, **4**(6), p 1456-1461  
**1997Dur:** N. Durlu, U. Gruber, M.A. Pietzka, H. Schmidt, and J.C. Schuster, Phases and Phase Equilibria in the Quaternary System Ti-Cu-Al-N at 850°C, *Z. Metallkde.*, 1997, **88**(5), p 390-400

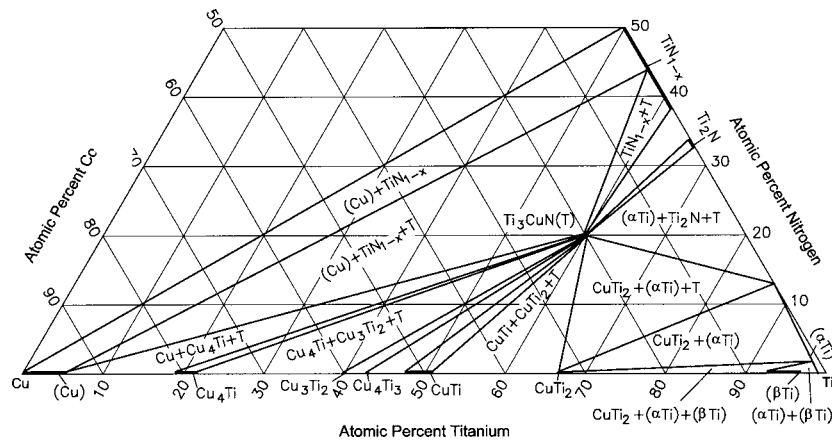


Fig. 1 Cu-N-Ti isothermal section at 850 °C [1997Dur]

